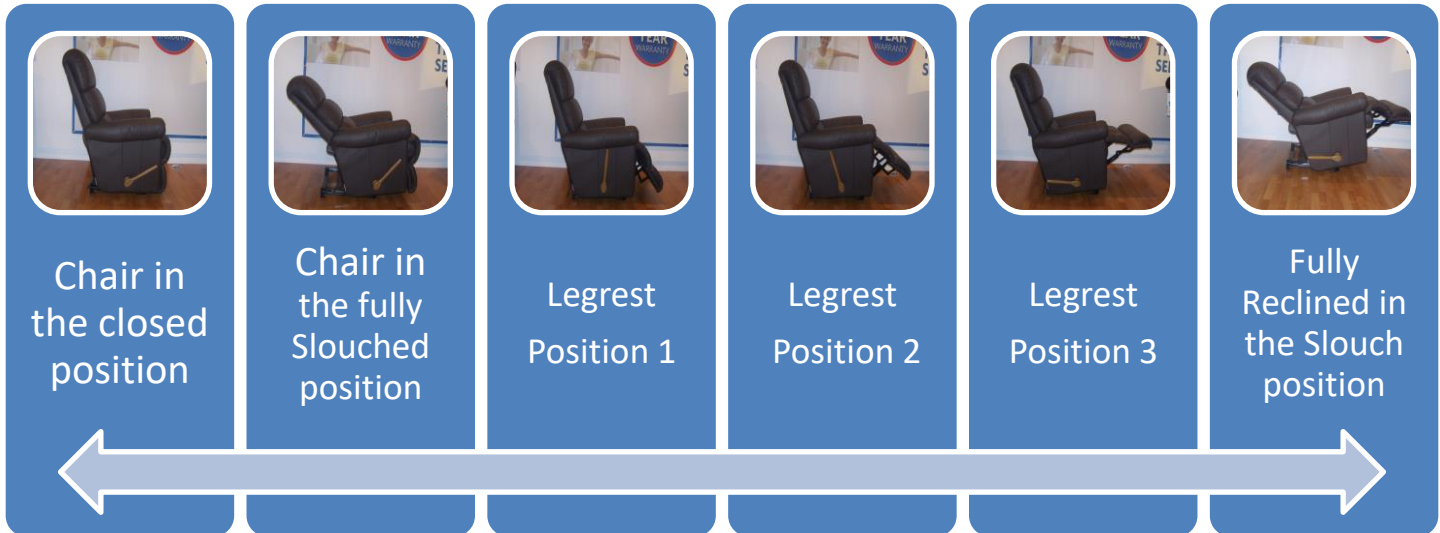


Manual Handle Recliner Chairs & Sofas

The Manual recliner mechanism used in La-Z-Boy furniture is unique and completely different to any other mechanism available. It has a 2 part operating system, whereby the backrest and legrest are totally independent of each other. Please refer to the pictures below.



As you can see from these pictures, the backrest is operated independently by simply using your body weight to put the Chair into the “Slouch” position. The legrest is operated by the lever on the side of the furniture, it has 3 positions and can be used with the furniture in the upright position, fully slouched or anywhere in between.

The desired amount of pressure required to put the furniture into the slouched position can be altered by altering the wing nut on the friction plate found inside the furniture.

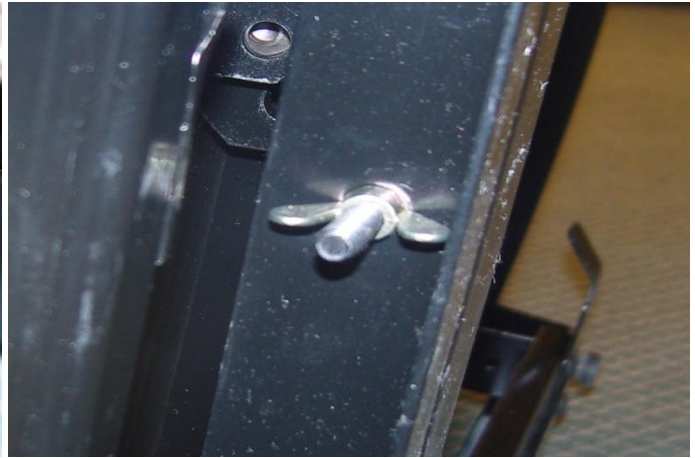
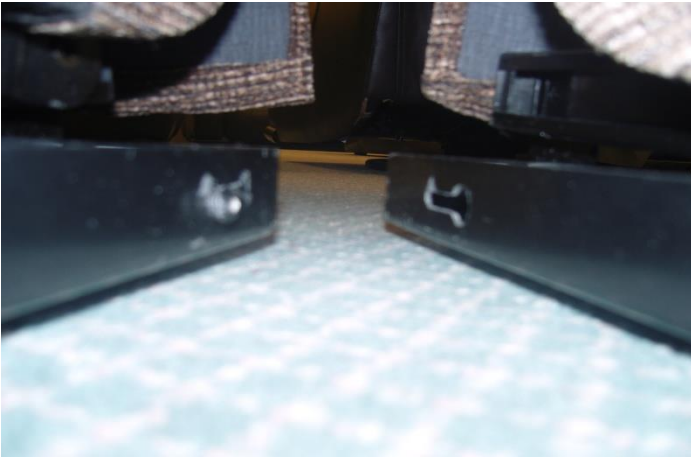


To increase the pressure required to operate the “slouch” position of the furniture simply turn the wing-nut in a clockwise direction. Similarly turn the wing-nut in an anti-clockwise direction to reduce the pressure required.

Please note, the setting of this is entirely at the users preference and will differ with body weight, height etc. Also there are 2 friction plates located on both sides of the mechanism.

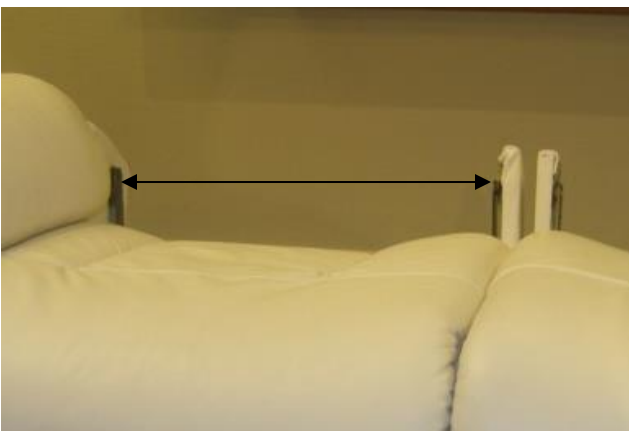
Assembly

The Sofas are modular and the bases need to be connected together as shown in these pictures. Every base rail has a key-hole slot which receives the male part from the rail it is being connected to. Simply line these up and interlock together as shown. When they are in the correct position the front of the base rails will be level and the holes to receive the locking bolt will be aligned. Fit the lock bolt and wing nut as shown.



When assembled correctly the gaps between the kickboards and seats should be of a nominal and equal distance. In the unlikely event that adjustment is required, simply release this bolt on the base rail with a T 30 Torx head socket and adjust accordingly.

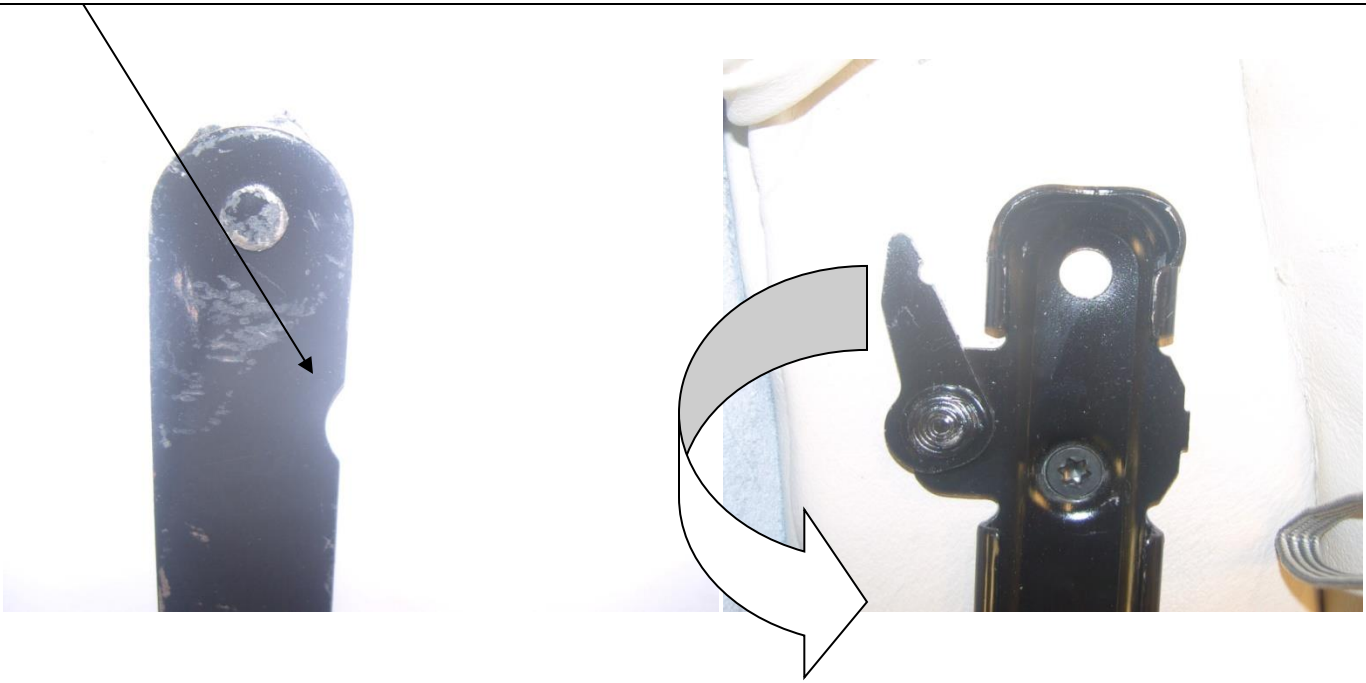
Please note: This will also alter the position of the backs.



After the bases have been assembled correctly, the backs need fitting to the receiving posts on the bases

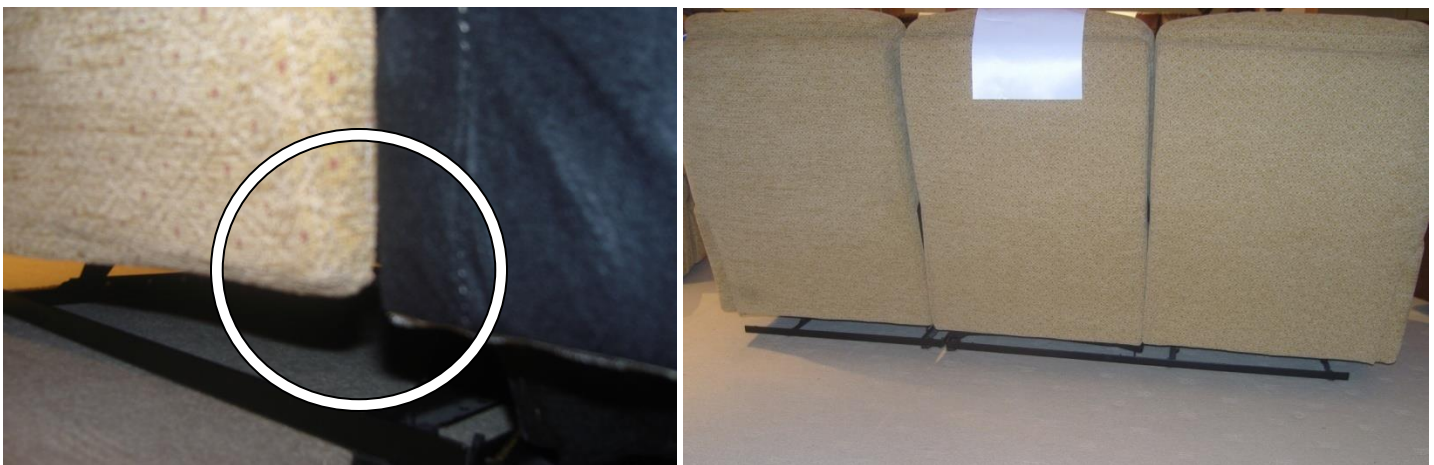
Please note: If the customer's order is a combination of Manual recliner and Auto recliner, be careful not to mix the backs up as the fittings are different.

To fit the backs simply locate the receiving brackets over the posts on both sides and push down firmly. When they are in the correct position the locking plate needs to be rotated through 180 degrees so that it locks into the groove on the post.



Once the backs have been fitted, the furniture then requires dressing. Depending on the model some outside backs are skirted and hang down over the base and some are tailored to fit around the base of the seat frame and are held in position by velcro.

The outside back is shaped on the bottom corner. First fit the shaped corner to the base then position the rest of the material evenly to the underside of the base to give a fully tailored appearance.



All that is left to do now is plump up any fibre fill cushions that may have been compressed during transit and hand over the literature that is contained within the furniture.